

Entering data using the CoralWatch website

The **aim** of this activity is to enter CoralWatch field data into the CoralWatch online global database and compare and analyse your own data with existing data (if applicable).

ACARA curriculum links

Science understanding (ACSSU116)

Science inquiry skills (ACSIS124, ACSIS125, ACSIS126, ACSIS129, ACSIS130, ACSIS131, ACSIS132)

Science as a human endeavour (ACSHE119 & ACSHE223)



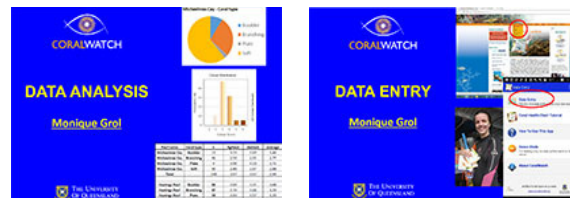
Instructions

1. Go to www.coralwatch.org
2. Go to the 'Download' tab and select 'Education Materials'.
3. Download the 'Data Entry' and 'Data Analysis' guidelines for step-by-step instructions.
4. Go to the 'Data' tab and select 'Enter data'.
5. You need to be signed in to submit a survey: you have to become a member to be able to enter data. Membership is free.
6. Enter all your details from your data slate and submit.
7. If you don't have GPS coordinates you can find your location on the map.
8. Enter all data records and look at your results.
9. Compare the data you collected to:
 - a. Past data on the same reef (if available).
 - b. A nearby reef.
 - c. Fellow students.

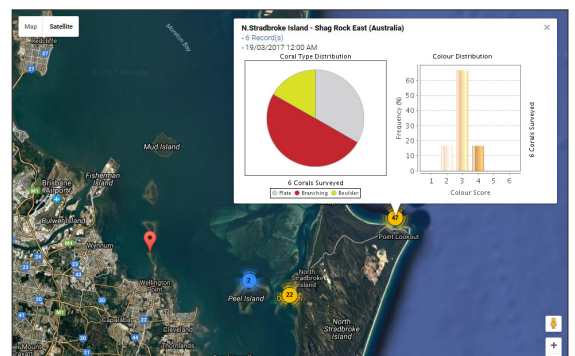
Point out the importance of entering real data. Entering survey data into the online CoralWatch global database ensures that the data can be used by reef managers and scientists studying coral bleaching.

Equipment

- Computer
- Internet access
- Your field data
- Data analysis pdf (download from CoralWatch)
- Data entry pdf (download from CoralWatch)



Example of the 'add new survey' page.



CoralWatch website allows you to view all the data recorded for a particular reef.