

Entering data using the CoralWatch data entry Apps

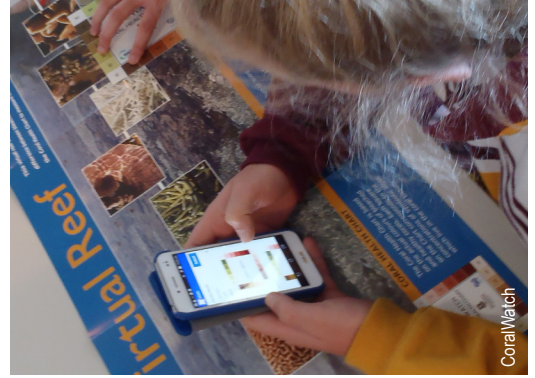
The **aim** of this activity is to enter CoralWatch field data using CoralWatch phone Apps, view and analyse survey results, and upload the data to the CoralWatch global database.

ACARA curriculum links

Science understanding (ACSSU116)

Science inquiry skills (AC SIS124, AC SIS125, AC SIS126, AC SIS129, AC SIS130, AC SIS131, AC SIS132)

Science as a human endeavour (AC SHE119 & AC SHE223)



Students can practice entering data on the mobile App using demo mode with the virtual reef.

Instructions

1. Download from the website the 'Data Entry' guideline for step-by-step instructions if needed (www.coralwatch.org/download-education-materials).
2. Download the CoralWatch data entry App on a phone. Available for Android and Iphone.
3. Login/register as a member. Membership is required to enter data. Membership is free.
4. Set your phone preferences to online/offline use - you can store data and upload it later.
5. Add a new survey and enter all details as requested.

Notes about GPS

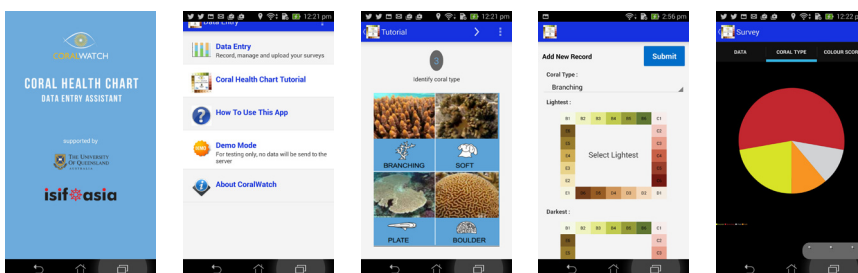
- Only select 'Use your current location' when you are at the actual field site. Don't use this option when you are back in the classroom.
 - If you revisit an existing field site - GPS coordinates will appear automatically and you can select 'Use above coordinates'.
 - Choose the 'Use map to choose location' to place a marker at your field site. This can be done in the field or classroom.
 - Or enter you coordinates manually.
6. After entering all your metadata, enter your survey data by selecting coral type, then the lightest and darkest colour for each coral.
 7. Once finished, check results and upload data to the database. You have to manually upload data.

Please note

- To practice entering data use 'demo mode' - no data will be send to the global database.
- You will still need your Coral Health Chart and slate to collect your data in the field, but this App will make it quick and easy to upload your data to CoralWatch.

Equipment

- Android or Apple mobile phone
- Internet access
- Your field data



Different screen previews of the CoralWatch data entry App.

CoralWatch data entry Apps allow you to:

- Enter CoralWatch data on your phone.
- Record the GPS coordinates on the spot.
- View your survey results.
- Store your survey data, work offline and upload at a later time.

