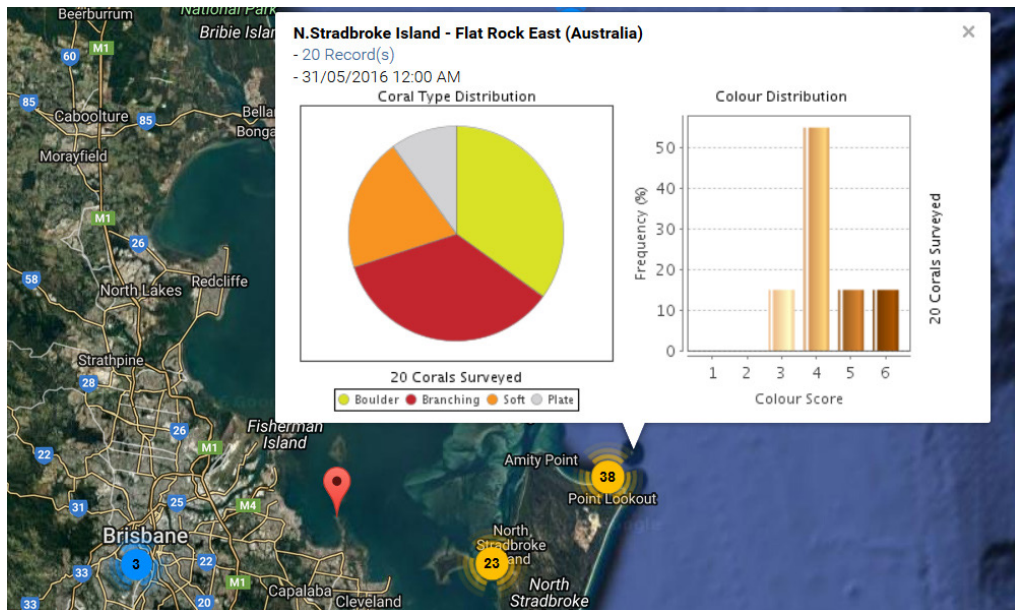


Interpreting real data from Moreton Bay

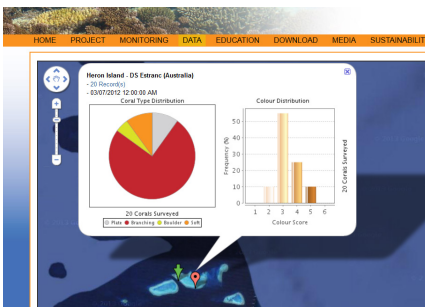


Map with inshore and offshore reef sites in Moreton Bay. Data shows average colour and coral type distribution for a selected reef, in this case N. Stradbroke Island - Flat Rock East.

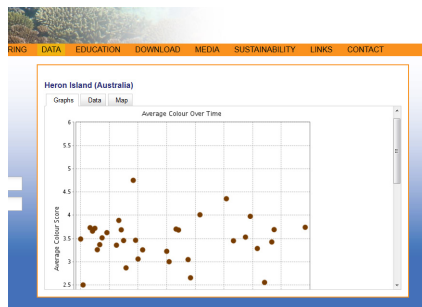
Instructions

In this activity you will analyse and compare data results from the CoralWatch website.

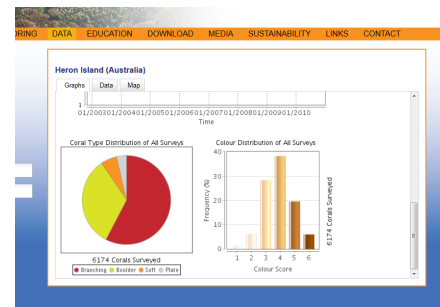
- Go to **www.coralwatch.org** and find the map under the data tab showing field data. Visit a site in inshore or offshore Moreton Bay and choose one survey.
 - What is the name of your reef?
 - Which coral type was most abundant?
 - Which coral type was the least abundant?
 - Which colour score had the highest frequency?
 - Who collected this data? Circle the answer.
 dive centre / scientist / conservation group / school or university / tourist / other
- Compare all surveys conducted on this reef by various people. Go to data/reefs and find the name of your previous reef and view the graphs.
 - What is the average colour over time?
 - Which coral type was the most abundant at this reef?
 - Which colour score has the highest frequency?
 - How many corals have been surveyed in total?
 - When was the last survey?



Data results single survey.



Average colour score over time comparing all surveys for one reef.



Average colour and coral type distribution comparing all surveys for one reef.