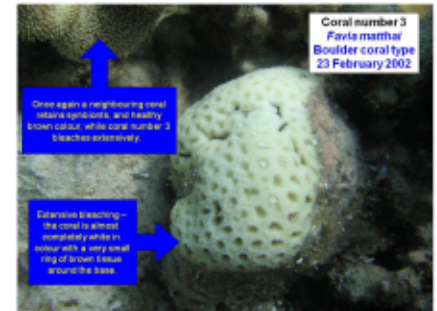
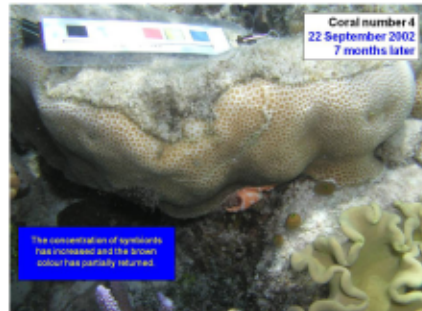


Measuring coral health using virtual reef booklets

Instructions

Use the virtual reef booklets to investigate the consequences and frequency of coral bleaching and determine if these events seem to be increasing.



- Using the CoralWatch virtual reef booklet, review the process and progression of bleached corals in the field. Take note of:
 - How many recover?
 - How long can recovery take?
 - How many died as a result of bleaching?
- Compare coral No. 1 and 2. Which species has recovered most in what time frame?
- Compare coral No. 5 and 6. Which one has mostly recovered?
Compare coral No. 6 with No. 2 (hard coral). What can happen to soft corals once the living tissue has died?
- How many months did it take for coral No. 4 to recover?
- Why can the Coral Health Chart not be used for the monitoring of blue corals?
- Go to coral No. 7 and track the seasonal changes in colour and create a graph showing coral colour over time. Take the average colour readings as data for your graph.



Before - During - After Bleaching Lizard Island 2016

In 2016 and 2017 Lizard Island was affected by another serious bleaching event. Download the Lizard island booklet from www.coralwatch.org/web/guest/education-products and write a summary of your findings.