

Moreton Bay

MORETON BAY - QUEENSLAND - AUSTRALIA

The diverse reefs of Moreton Bay are home to more than 120 tropical and temperate species of coral. Environmental conditions vary greatly between these reefs and each reef hosts a coral community that is specialised for its conditions. The reefs and coral communities of Moreton Bay are of high ecological, economic and recreational importance and require our care.



INSHORE REEFS



Characteristics

- Temperature range: 12.5-32°C
- High levels of sedimentation and turbidity
- Large changes in salinity
- Low coral diversity - 42 species
- Dominated by boulder corals (Faviidae) and soft corals

Locations

Mud Island, Peel Island, Myora, Green Island, Tangalooma, Amity, Wellington Point, King Island, St. Helena, Goat Island.



Reef areas of the Moreton Bay Marine Park where coral can be found.

Source: Data: UniDive, Reef Check Australia & Remote Sensing Research Centre and Imagery: Landsat TM 8-8-2004 USGS.

OFFSHORE REEFS



Characteristics

- Temperature range: 18-26°C
- Low levels of sedimentation and turbidity
- Stable salinity
- High coral diversity - 120 species
- Various growth forms: plating, branching and encrusting coral

Locations

Flinders Reef, China Wall, Cherubs Cave, Henderson. North Stradbroke Island/ Point Lookout reefs: Flat Rock, Shag Rock, Manta Ray Bommie.

CORALS - HARD VERSUS SOFT



Hard corals - Characteristics

- Hard calcium carbonate skeleton
- Reef building
- Rigid structure
- Symbiotic relationship with zooxanthellae
- Each polyp has 6 tentacles or multiples of 6
- Lots of research



Soft corals - Characteristics

- No calcium carbonate skeleton
 - may appear soft or leathery
- Non reef building
- Soft structure that can move
- Only some have symbiotic zooxanthellae
- Each polyp has 8 tentacles or multiples of 8
- Not much research

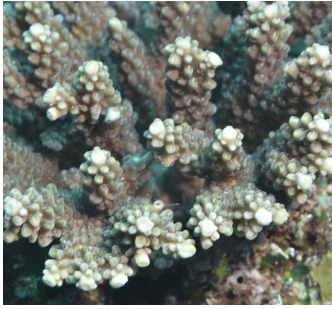
CORALWATCH



CoralWatch integrates coral reef education and global reef monitoring. Using the Coral Health Chart volunteers from around the globe can monitor reefs and contribute to our global coral bleaching database. Anyone can get involved. Download a 'Do It Yourself Kit' and order a free Coral Health Chart at www.coralwatch.org today!

Common Corals in Moreton Bay

HARD CORALS



Finger coral
Acropora sp.

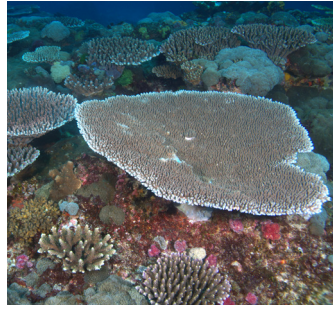
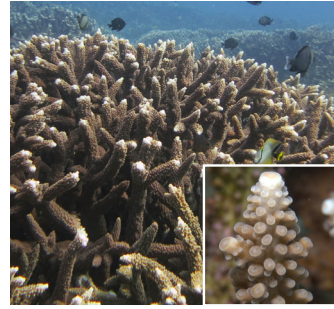


Plate coral
Acropora sp.



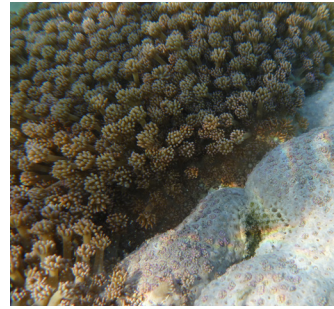
Staghorn coral
Acropora sp.



Brain coral
Favia sp.



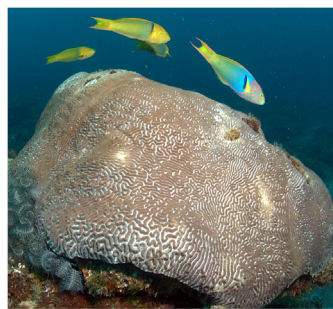
Brain coral
Favites sp.



Daisy coral
Goniopora sp.



Plate coral
Turbinaria sp.



Large meandroid brain coral
Platygyra sp.



Stem coral
Pocillopora sp.



Orange tube coral
Tubastrea sp.



Large meandroid brain coral
Oulophyllia sp.



Lesser knobbed coral
Cyphastrea sp.



Ringed fleshy coral
Acanthastrea sp.



Fleshy coral
Acanthastrea sp.

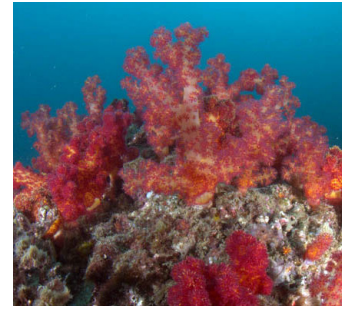


Meandroid brain coral
Goniastrea sp.

SOFT CORALS



Spotted soft coral
Cladiella sp.



Prickly red tree coral
Dendronephthya sp.



Red and gold seafan
Melithaea sp.



Pulse coral
Xenia sp.



Leather soft coral
Sarcophyton sp.

© CoralWatch, February 2020. Photos: Cedric van den Berg, Monique Grol, Kyra Hay, Diana Kleine, Chris Roelfsema & CoralWatch
Supported by: