

# VIEW DATA RESULTS - INTERACTIVE DATA MAP



[Home](#) [About](#) [Monitoring](#) [Data](#) [Education](#) [Outreach](#) [News](#) [Projects](#) [Support](#) [Shop](#) [Cart](#) [Search](#)

[WWW.CORALWATCH.ORG](http://WWW.CORALWATCH.ORG)

[Enter Data](#)

[Interactive Data Map](#)

[Database](#)

[Instructions](#)

[Data Reports](#)

Or use menu bar on ALA

[CoralWatch Home](#) [Data entry](#) [Interactive data map](#) [All Records](#) [My Records](#) [Instructions](#) [Logout](#)

A platform that shows real-time data and allows you to explore coral health surveys conducted around the world, providing direct feedback on colour, coral type, average colour score, and potential bleaching.



# 'ALL DATA' interactive data map



This map displays coral reefs globally, each represented by a marker. Click on a marker to view survey results. Zoom further to view individual reefs or surveys.

# ‘POTENTIAL BLEACHING’ interactive data map



This selects those coral reefs (red marker) where potential bleaching may have occurred. Click on a marker to view details about the CoralWatch surveys conducted in that area.



# FEATURES

Satellite ▼

Heron Island, Canyons, Gr...

or map

1 Apr 2024 - 30 Sep 2024

Search reef, type name

Select date range

Click on a blue circle to view data results for colour distribution, coral type and average colour score data for the number of surveys conducted in that area.

Full screen

Link copied to clipboard

Reset view

All data mode info

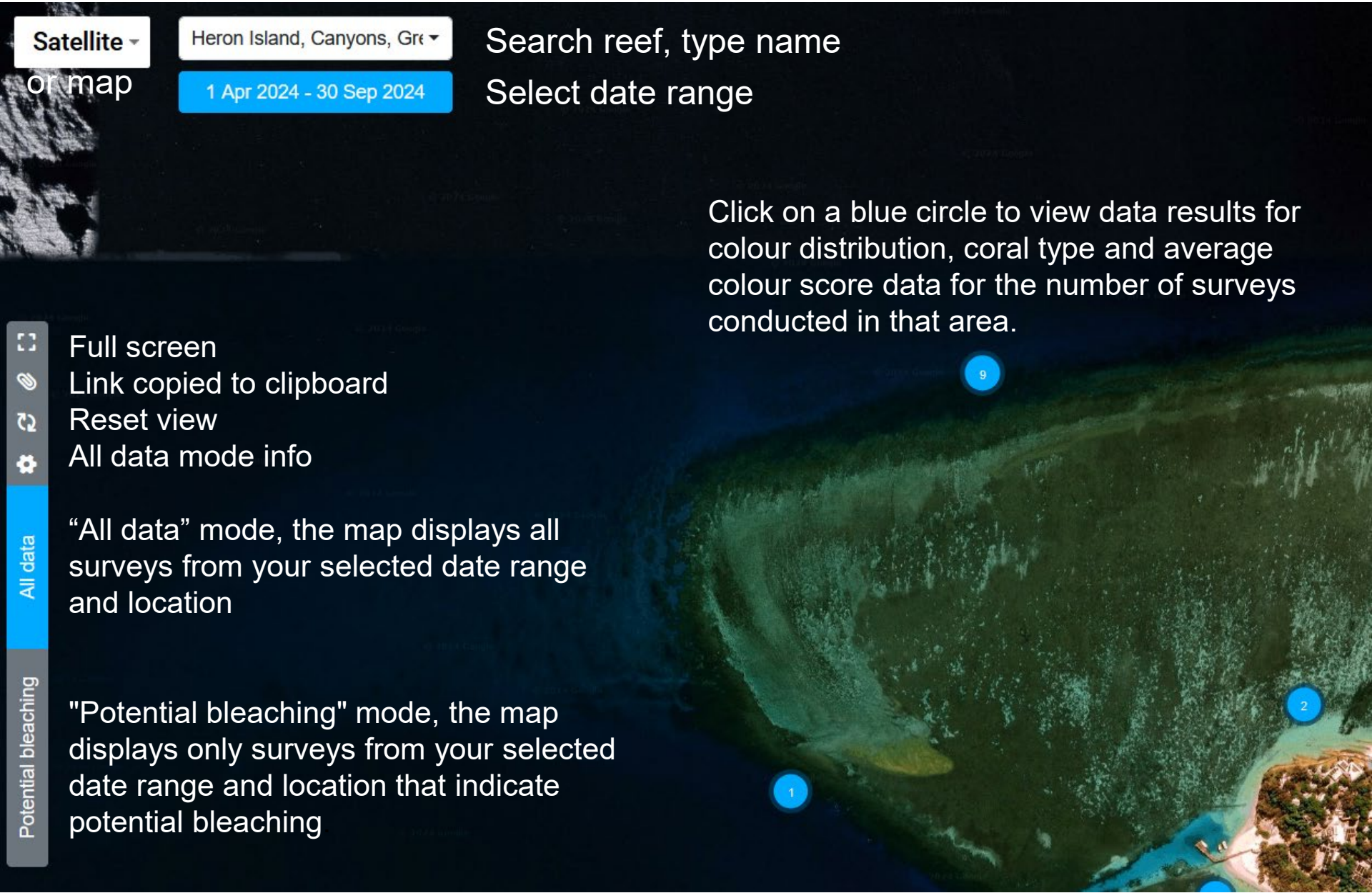
"All data" mode, the map displays all surveys from your selected date range and location

"Potential bleaching" mode, the map displays only surveys from your selected date range and location that indicate potential bleaching



All data

Potential bleaching



Search for a site

# FIND YOUR DATA

Search for your location and use date range

The screenshot displays the CoralWatch Australia web application. A search bar at the top left contains the text 'heron'. Below it, a list of search results is shown, including 'Blue Pools, Heron Island, Great Barrier Reef (QLD), Australia' and 'Coral Gardens, Heron Island, Great Barrier Reef (QLD), Australia'. A red arrow points from the 'Search for a site' text to the search bar. On the right side, a 'Date range' label with a red arrow points to the 'Filter surveys by date' dialog box. This dialog box shows a date range of 'Dec 2022 - Nov 2023' and a calendar view for December 2022 and January 2023. The calendar view shows dates from 1 to 31 for both months. The 'Custom Range' button is highlighted in blue. The background of the interface shows a satellite map of the Great Barrier Reef area.

**Search for a site**

Search for a site

heron

Blue Pools, Heron Island, Great Barrier Reef (QLD), Australia

Coral Gardens, Heron Island, Great Barrier Reef (QLD), Australia

Gorgonian Hole, Heron Island, Great Barrier Reef, (QLD), Australia

Heron Island, Canyons, Great Barrier Reef (QLD), Australia

Heron Island, Cappuccino Express, Great Barrier Reef (QLD), Australia

Heron Island, Coral Cascades, Great Barrier Reef (QLD), Australia

Heron Island, Coral Grotto, Great Barrier Reef (QLD), Australia

Heron Island, DS Estranc, Great Barrier Reef (QLD), Australia

Heron Island, Gantry, Australia

Heron Island, Great Barrier Reef (QLD), Australia

Heron Island, Halfway, Great Barrier Reef (QLD), Australia

Heron Island, Harry's Bommie, Great Barrier Reef (QLD), Australia

Heron Island, Heron Bommie, Great Barrier Reef (QLD), Australia

Heron Island, Heron Reef, Great Barrier Reef (QLD), Australia

Heron Island, Hole in the Wall, Great Barrier Reef (QLD), Australia

Heron Island, HRP\_SE\_0 twin peaks, Great Barrier Reef (QLD), Australia

Heron Island, Junction, Great Barrier Reef (QLD), Australia

Heron Island, Last Resort, Great Barrier Reef (QLD), Australia

Heron Island, Libby's Lair, Great Barrier Reef (QLD), Australia

Heron Island, NETR4, Great Barrier Reef (QLD), Australia

Heron Island, NETR5, Great Barrier Reef (QLD), Australia

Heron Island, North Beach, Great Barrier Reef (QLD), Australia

**Date range**

Filter surveys by date

Pick a date range to filter by:

Dec 2022 - Nov 2023

This month

Previous 3 Months

Previous 6 Months

Previous 12 Months

Previous 18 Months

Previous 2 Years

Previous 5 Years

Previous 10 Years

All time

Custom Range

Dec 2022

Jan 2023

Dec 2022 - Nov 2023

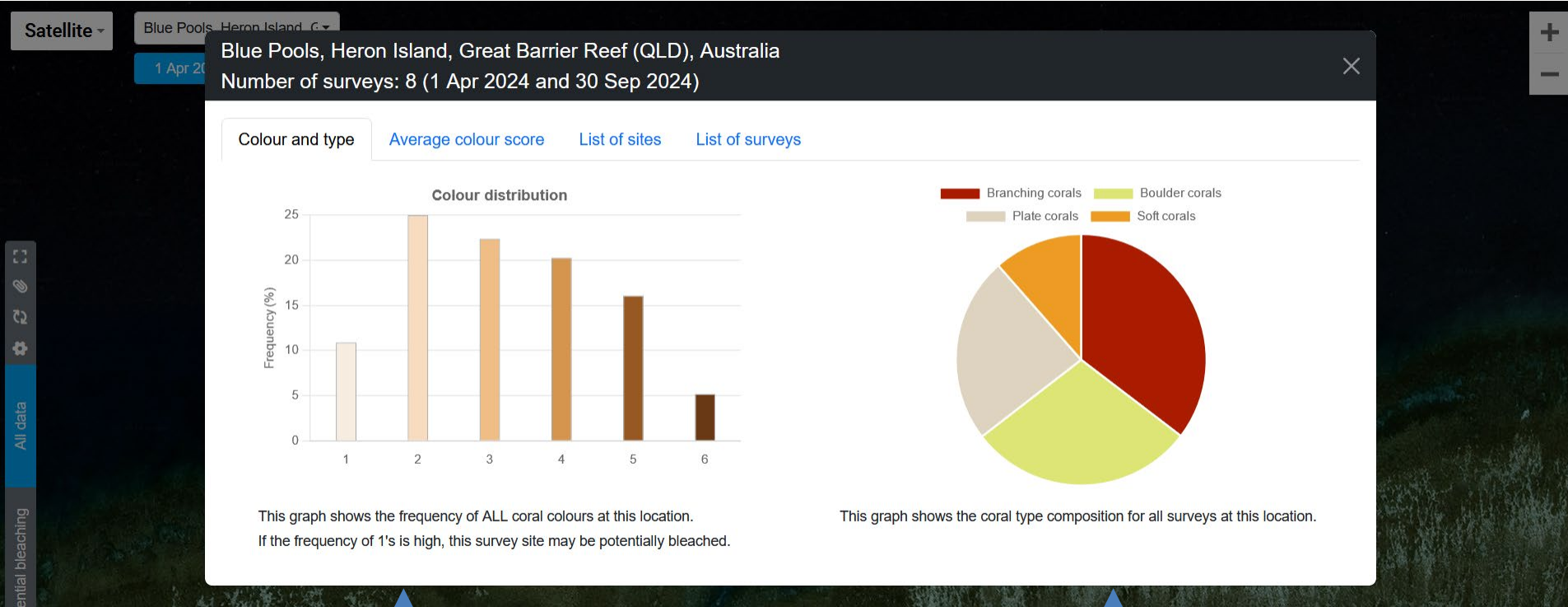
Cancel

Apply

Keyboard shortcuts Map data ©2023 Imagery ©2023 NASA, TerraMetrics Terms

# VISUALIZE YOUR DATA

Select what you would like to visualize your data



The frequency of coral colours at the selected location for number of surveys

The coral type composition for all surveys at the selected location



# AVERAGE COLOUR SCORE OVER TIME



Average colour score over time per month, including results from the selected number of sites, surveys and date range

# LIST OF SITES / LIST OF SURVEYS

Satellite

Blue Pools, Heron Island, Great Barrier Reef (QLD), Australia

1 Apr 2024

Blue Pools, Heron Island, Great Barrier Reef (QLD), Australia

Number of surveys: 8 (1 Apr 2024 and 30 Sep 2024)

Colour and type

Average colour score

List of sites

List of surveys

Download selected

Download all

You can download your data here in a csv file

Site name	Location	Number of surveys
Blue Pools, Heron Island, Great Barrier Reef (QLD), Australia	151.92266, -23.43422	8

Satellite

Blue Pools, Heron Island, Great Barrier Reef (QLD), Australia

1 Apr 2024

Blue Pools, Heron Island, Great Barrier Reef (QLD), Australia

Number of surveys: 8 (1 Apr 2024 and 30 Sep 2024)

Colour and type

Average colour score

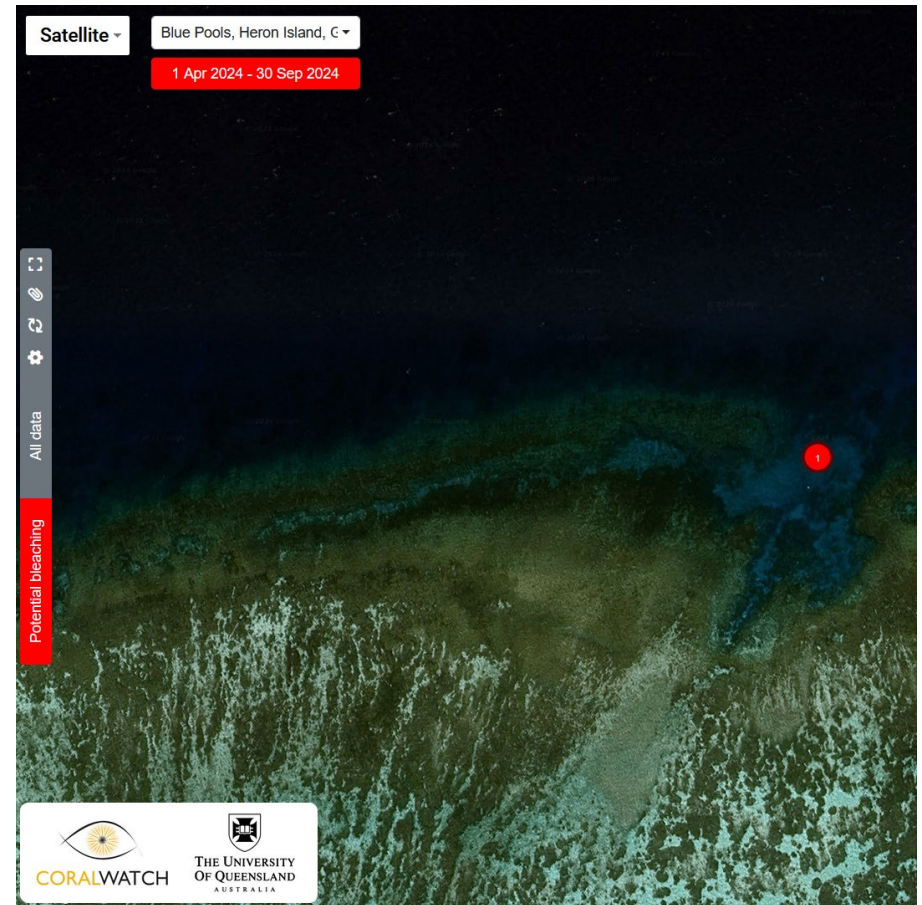
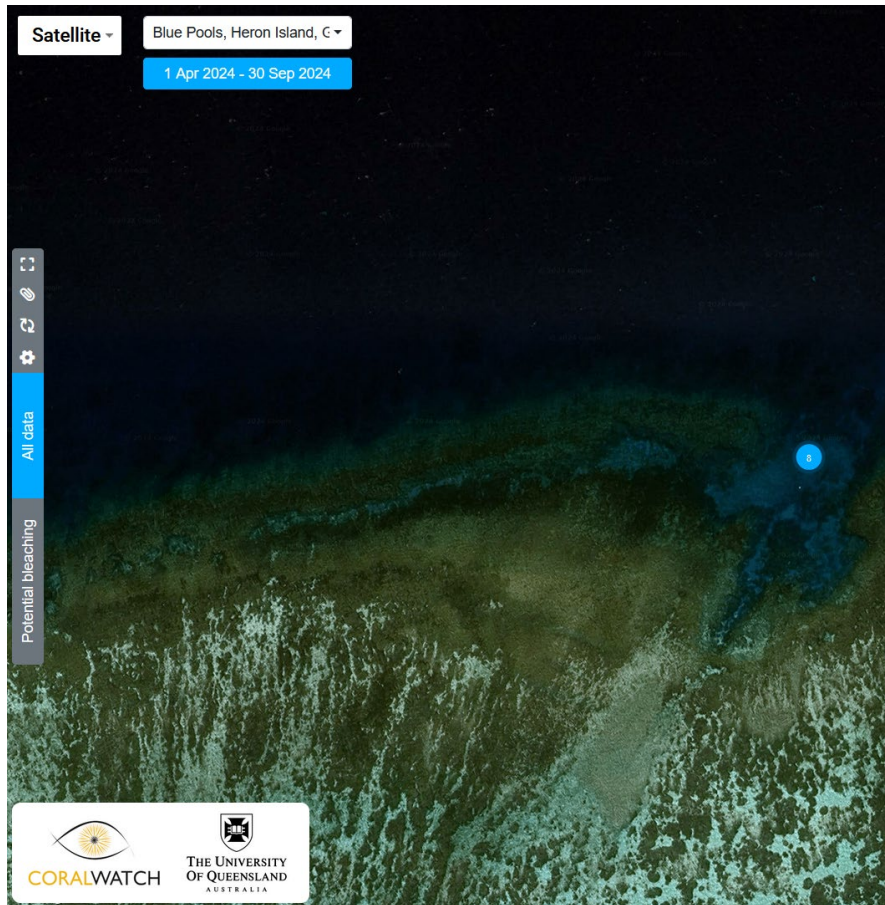
List of sites

List of surveys

Survey date	Site name	Recorded by
24 Aug 2024	Blue Pools, Heron Island, Great Barrier Reef (QLD), Australia	CoralWatch Ambassadors
22 Aug 2024	Blue Pools, Heron Island, Great Barrier Reef (QLD), Australia	CoralWatch
22 Aug 2024	Blue Pools, Heron Island, Great Barrier Reef (QLD), Australia	CoralWatch
22 Aug 2024	Blue Pools, Heron Island, Great Barrier Reef (QLD), Australia	CoralWatch
22 Aug 2024	Blue Pools, Heron Island, Great Barrier Reef (QLD), Australia	CoralWatch Ambassadors
21 Aug 2024	Blue Pools, Heron Island, Great Barrier Reef (QLD), Australia	CoralWatch
12 May 2024	Blue Pools, Heron Island, Great Barrier Reef (QLD), Australia	CoralWatch
10 Apr 2024	Blue Pools, Heron Island, Great Barrier Reef (QLD), Australia	evans river k-12 school

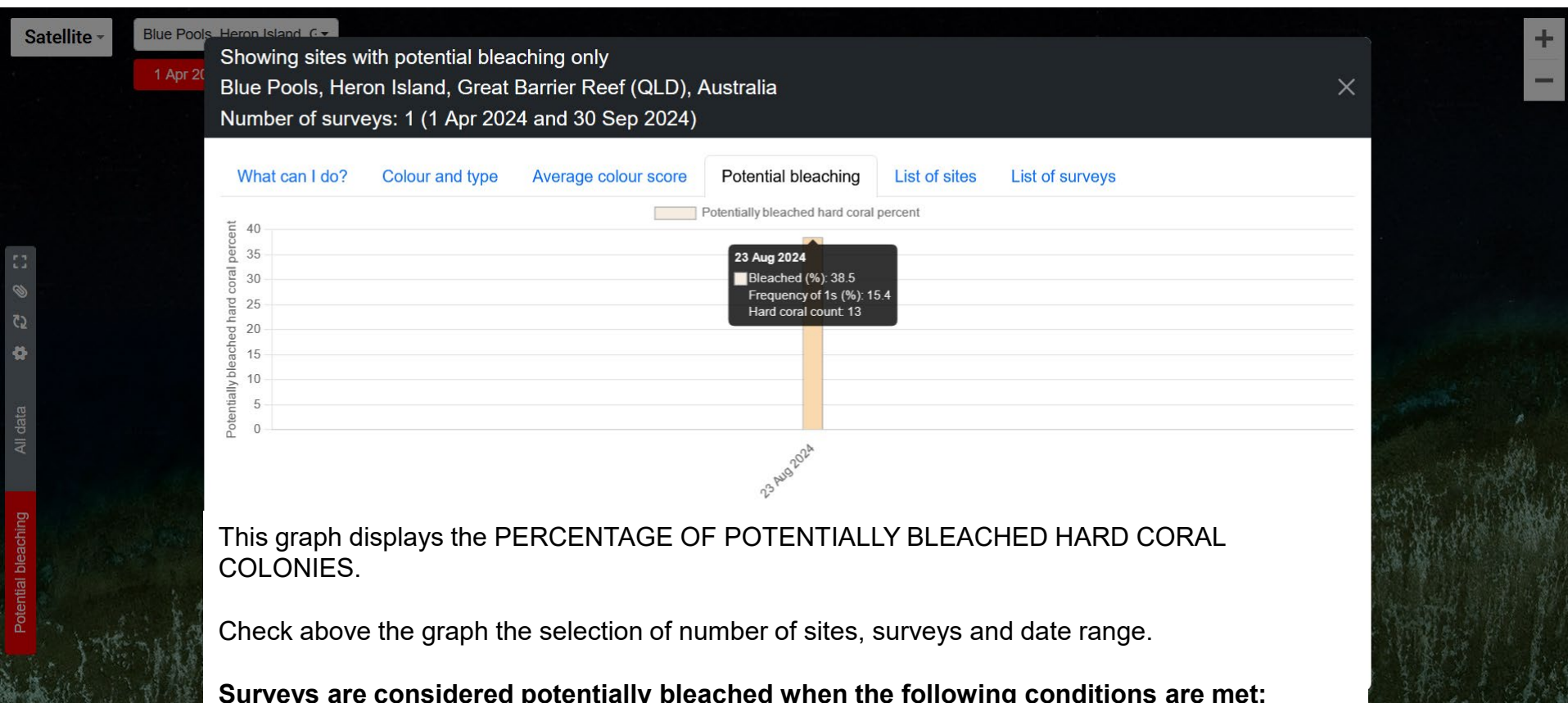


# POTENTIAL BLEACHING MODE



For the period selected (1 April 2024 – 30 Sep 2024) there are 8 surveys completed of which 1 is indicating potential bleaching

# POTENTIAL BLEACHING MODE



This graph displays the PERCENTAGE OF POTENTIALLY BLEACHED HARD CORAL COLONIES.

Check above the graph the selection of number of sites, surveys and date range.

**Surveys are considered potentially bleached when the following conditions are met:**

- **A survey includes at least 10 hard corals AND**
- **At least 20% of the recorded colour scores are a 1 ([check colour graph](#)) OR**
- **At least 20% of the recorded coral colonies have an average colour score of <2.1**

# FAQ's – What if I discover bleaching?

## Actions you can take

- Conduct additional CoralWatch surveys to confirm if a bleaching event is occurring.
- Spread the word – inspire others to help monitor your reefs (e.g. Facebook, Twitter).
- Contact your local reef management group to further investigate.



# FAQ's – Why your data is valuable?

- You can help to identify locations of **POTENTIAL BLEACHING** and take further action
- Your data helps scientists and managers to understand where and when bleaching takes place and if corals recover.